

MUNSON
WILLIAMS
PROCTOR
ARTS
INSTITUTE



ANNUAL REPORT 2012-2013

MUNSON
WILLIAMS
PROCTOR
ARTS
INSTITUTE

THE MUNSON-WILLIAMS-PROCTOR ARTS INSTITUTE'S MISSION IS

- to serve diverse audiences by advancing the appreciation, understanding and enjoyment of the arts
- to promote interest and participation in the arts
- to engender artistic self-expression and personal creativity
- to assume a leadership and advocacy role for the arts



Message from the President

It is a pleasure and honor to address you as President of this fine organization.

While looking for a theme for this narrative, I reflected on our founders' legacy which is a commitment to our community. More than 95 years ago they elected to establish an "institute for public educational and cultural usefulness."

It is through that philosophy that we continue our commitment to the community. We have partnered with the Broadway Theater League, the Mohawk Valley Center for Refugees and area schools, just to name a few.

A collaboration with the New York State Education Department allowed us to step out of our conventional programming to present *The First Steps to Freedom: Abrahams Lincoln's Original Emancipation Proclamation*. This special two-day exhibit brought nearly 7,000 people to view the document. We stayed open 12 hours each day and made special arrangements for more than 1,500 school children to visit.

As we celebrate our achievements we also note the challenges we continue to face. The mounting financial issues continue to linger and we will meet these challenges head-on and strive to develop the strong base of financial support that has been the cornerstone of our existence since our founding.

As this year commences, we will continue our commitment to serving you, our community.

Anthony J. Spiridigloizzi
President

Contents

School of Art	3
Museum of Art	6
Performing Arts	9
Supporters	13
Annual Operating Fund	16
Annual Attendance	18
Sponsors	19

Board of Trustees

F.X. Matt III, Chair
Michael D. Damsky, Vice Chair
Dr. William L. Boyle Jr., Secretary

Vige Barrie
Joseph J Corasanti
Mary McLean Evans
Donna Harkavy
Steven R. Kowalsky
Mark D. Levitt
William F. Locke
John B. Stetson
Linda B. Vincent

School of Art



THE SCHOOL OF ART, like many art schools and colleges across the nation, is facing the landscape of changing demographics and economic challenges. The School of Art saw a drop in the number of freshman enrolled this fall resulting in the necessity to evaluate and assess enrollment strategies and procedures, and increase our efforts in communication. Alicia Lührssen, Admissions Director, and her team has refocused attention into regional markets to elevate our presence within a 100 mile radius. Promotional material and mailings were refreshed to create a more clear and understood brand.

PrattMWP College of Art and Design
PrattMWP's Communication Design department had a year with tremendous results as our sophomore students projects earned nine American Graphic Design Awards and will be featured in the December 2013 issue of *GD USA magazine*. Since 1963 *Graphic Design USA* has been the news magazine for graphic designers and other creative professionals. Only 15 percent of the entries receive recognition in this competition. The PrattMWP students receiving awards are:

- Eun Bin Park
Climate Reality Project
- Alix Pfisterer
Emily Post Book of Etiquette
- Star Tucker
Quantum Packaging
- Stacy Kamin
Classy Bitch Beer Packaging and Integrated Campaign
- Estefanny Ramirez
Qoqoa Branding and Packaging Design



Jessica Leung
Starbucks Cup Illustration
 Danielle Foods
New York Raised Campaign
 Alix Pfisterer
 Estefanny Ramirez
 Flor Baumann

The School of Art Gallery housed six exhibitions this year beginning with the Annual Faculty Exhibition, featuring the work of all the PrattMWP full-time and adjunct faculty. The Alumni Show followed this exhibition with the works of Adam DeVarney, Jack Norton, Shelby Sue, and Rebecca Zeh. Sandra Stephens, Gallery Director and Assistant Professor of 4D Design, curated a multi-media exhibition of figure based artists entitled "Figure Drawing." The first two exhibits of the spring were two solo exhibitions by artists Gale Farley, and Dave Mishalanie. The final exhibit of the year highlighted the work of the freshman class in the Freshman Juried Show.

This year's commencement ceremonies provided several moving and historical elements. Guest speaker for the event was alumnus of 1997, Josh Koury. A native of Clinton, NY, Josh is now a nationally recognized documentary director and gave an inspirational talk on the meaning of following an artistic path and being part of the Munson-Williams-Proctor Arts Institute experience. Josh spent time earlier in the week meeting and speaking with students and gave a premier of his movie "Journey to Planet X" which was a featured film at the Tribeca Film Festival. Long time school benefactor Lorraine Chanatry followed Mr. Koury and presented her scholarship to Colleen Doody, rising sophomore. Ms. Chanatry recounted that as a child she was a student in the first class ever offered at the School of Art in 1941, and her positive experiences at the Institute led her to a rewarding lifelong career as an art educator.

Sampling of projects by PrattMWP
 Communication Design and Illustration students

Professor Keith Sandman works with student in the digital photo lab



The event closed with a moving tribute to Professor Keith Sandman. After 34 years of service to the Institute, Keith, one of the most beloved Professor's at the School of Art, celebrated his retirement. His service was recognized by the student body with a tribute video offering best wishes from all of the Munson-Williams-Proctor Arts Institute staff.

The rising class of sophomores recognized at the ceremony was 72 with 59 registered to move to the Pratt Brooklyn campus, making it the highest number of students the PrattMWP program has sent to Brooklyn.

PrattMWP was the beneficiary of a generous gift of \$100,000 from the estate of Ruth Bice to the Institute. Ms. Bice grew up in the Utica area and was a long time employee of Eastman Kodak. Ms. Bice's direct relationship to the Institute is through her father, a graduate of Pratt

Institute, who was the on-site architect during the construction of the Philip Johnson building which houses the Institute's Museum. Ms. Bice was drawn to donating to the Institute because of the unique relationship between Munson-Williams-Proctor and Pratt Institute. In tribute to the donation the school's photography lab is now named in her honor.

Community Arts and Dance

The Community Arts Program Coordinator Janelle Roginski made significant strides in introducing new classes and workshops this year. The program is seeing a steady growth in first time students and many of the long time students enjoying participating in the one and two day workshops to expand and focus on classes they have taken at the Institute.

Moving into the digital age, the Community Arts and Dance program moved all of its Class Catalog to online information

and registration. The savings in print, mailing and design production will allow the program to maintain affordable class prices. All aspects of class registration can take place easily through the Institute's website.

The School of Art continued its commitment to the region's high school artists by hosting the annual Congressional Art Show, an exhibition of juried work of high school students for the 24th Congressional District. Representative Richard Hanna presented awards to students from throughout the 11-county region. Award winners will have their works hanging in the congressman's regional offices and the best works will be displayed in Washington D.C.

Ken Marchione
Interim Dean

Munson-Williams-Proctor Arts Institute

The mission of the Museum of Art is to collect, preserve, and exhibit art, artifacts, and articles of importance; to provide instruction, enrichment, and appreciation of these objects; and to facilitate an understanding of the various peoples and the cultures who produced and used them.

Museum of Art



MUSEUM DIRECTORS STATEMENT

Having just completed my first full year as Director of the Museum of Art, I have reflected over the last twelve months on the power of art. An object—whether a painting by Andy Warhol or Abraham Lincoln's original *Emancipation Proclamation*—tells a story and enhances our ability to not just look, but to truly see and understand the world around us. In the Museum of Art, the 2012-13 fiscal year was full of exciting exhibitions, dynamic acquisitions, and thousands of new visitors to our galleries. Exhibitions explored topics as diverse as ancient Egypt to the anniversary of the Armory Show to pop artist Andy Warhol. The rich array of programs offered by the Museum Education Department deepened our audience's understanding of and appreciation for artworks.

At the heart of all we do is the permanent collection. Generous benefactors have demonstrated their belief in the power of art in a tangible way through the gifts to the permanent collection listed on the following pages. These gifts greatly enhance the strengths of the permanent collection—paintings, works on paper, and decorative arts. These artworks will benefit generations of visitors and enable the Museum to better serve our audience.

In a culture where we spend hours each day engaging with technology, museums offer genuine experiences that cause us to think differently and feel sincerely. In

Tom Miller, *American* (1945–2000)
Summer in Baltimore (detail), 1994

a region that speaks dozens of languages, art offers a common visual language we can all share. I thank our community for its support of the arts, and I look forward to seeing each of you in the Museum galleries.

Anna Tobin D'Ambrosio

Director and Chief Curator, Museum of Art

Museum of Art Acquisitions

Paintings

Philip Smith, American (b. 1952)
River, 1993
Oil and wax on linen
Gift of Cynthia Hazen Polsky, 2012.11

Eleanor Ecob Morse, American (1837–1921)
Still Life, ca. 1890
Oil on canvas
Gift of Donald Neiman in Honor of Dr. Paul D. Schweizer, Ph.D. for his continuing dedication and support of the Museum and to the Munson-Williams-Proctor Arts Institute, 2013.1.1

Works on Paper

Stephen Greene, American (1917–99)
Untitled [#1-11], 1984
Graphite and green wash on paper
Gift of Lisbeth and Jason McCoy, 2012.12.1-11

Sandra Z. De Visser, American (b. 1938)
Kristallnacht Series, 1988
Monotype with *chine collé* on paper
Gift of Sandra Z. De Visser, 2012.13.1-20

Tom Miller, American (1945–2000)
Summer in Baltimore, 1994
Color screenprint
Gift of Mr. and Mrs. Stephen B. Hameroff, Courtesy of the Steven Scott Gallery, Baltimore, Maryland, 2012.14.1

Tom Miller, American (1945–2000)
The National Aquarium in Baltimore, 1996
Color screenprint
Gift of Mr. and Mrs. Stephen B. Hameroff, Courtesy of the Steven Scott Gallery, Baltimore, Maryland, 2012.14.2

Lynn Schwarzer, American (b. 1955)
Massification of Labor, 1988–89
Ink jet print on paper
Gift of Anna and Paul D'Ambrosio, 2012.15

Robert Mangold, American (b. 1937)
PAGES, 1-12, 1989
Intaglio prints on paper
Gift of Robert and Jan Anderson, 2012.17.1-12

Samuel F. B. Morse, American (1791–1872)
Meiringen, Switzerland, 1831
Graphite on laid paper (mounted in a 19th century frame)
Gift of Donald Neiman in Honor of Dr. Paul D. Schweizer, Ph.D. for his continuing dedication and support of the Museum and to the Munson-Williams-Proctor Arts Institute, 2013.1.2

Samuel F.B. Morse, American (1791–1872)
Sketch of Edgar Allen Poe and Seven Others (Head Studies of Eight Men)
Brown ink on thin, blue-gray, smooth wove paper
Gift of Donald Neiman in Honor of Dr. Paul D. Schweizer, Ph.D. for his continuing dedication and support of the Museum and to the Munson-Williams-Proctor Arts Institute, 2013.1.3

Gary Simmons, American (b. 1964)
Chandelier Spin, 2012
Color aquatint on heavy wove paper
Museum Purchase, 2013.2

Polly Apfelbaum, American (b. 1955)
Dogwood Potpourri, 2012
Color woodblock print on handmade paper
Museum Purchase, 2013.3

Spencer Finch, American (b. 1962)
The River that Flows Both Ways (Hudson River, June 12, 2008: 9:20 am), 2011
Double couched pigmented over beaten abaca paper with trapped bubbles
Museum Purchase, 2013.4.1

Decorative Arts

Attributed to Bradley and Hubbard Mfg. Co., Meriden Connecticut (active 1854–1940)
Candlesticks (pair), ca. 1885
Copper, brass, and silver plate
Museum Purchase, 2012.8.1-2

White's Pottery, Utica, New York (active 1838–1907)
Jar, 1863–76
Stoneware
Gift of Ann M. Tabrizi in memory of her parents, Bernard and Ann Wald, 2012.9

Attributed to Mount Washington Glass Co., New Bedford, Massachusetts (active 1837–1958)
Vase, ca. 1880–90
Glass
Gift of Eric Streiner, 2012.10

Meriden Silverplate Company, Meriden, Connecticut (active 1869–98)
Nut bowl, ca. 1886
Silver plate
Museum Purchase, 2013.5

Possibly William Dell & Co., Cincinnati, Ohio (active ca. 1891–92)
Vase ca. 1890
Ceramic
Gift of Robert Tuggle in Honor of Anna T. D'Ambrosio, 2013.6.1

Philip Smith, American (b. 1952), *River*, 1993

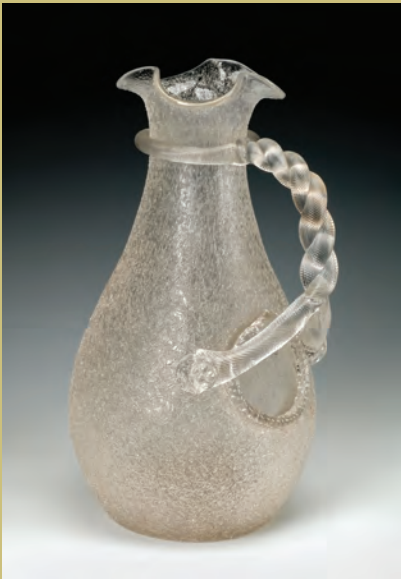


Attributed to Bradley and Hubbard Mfg. Co. (active 1854–1940), *Candlesticks (pair)*





Gary Simmons, American (b. 1964)
Chandelier Spin, 2012



Attributed to Boston & Sandwich Glass Co.,
Sandwich, Massachusetts, active 1825–88
Champagne Pitcher, ca. 1877–85

William Dell & Co., Cincinnati, Ohio (active ca. 1891–92)
Vase, 1891–92
Ceramic
Gift of Robert Tuggle in Honor of Anna T. D'Ambrosio,
2013.6.2

Attributed to Avalon Faience, Baltimore, Maryland
(est. ca. 1871)
Pitcher, ca. 1885–90
Ceramic
Gift of Robert Tuggle in Honor of Anna T. D'Ambrosio,
2013.6.3

Attributed to Boston & Sandwich Glass Co., Sandwich,
Massachusetts (active 1825–88)
Champagne Pitcher, ca. 1877–85
Glass
Gift of Robert Tuggle in Honor of Anna T. D'Ambrosio,
2013.6.4

Derby Silver Co., Derby, Connecticut
(active 1873–1933)
Ice Water Pitcher, ca. 1885
Silver plate
Gift of Robert Tuggle in Honor of Anna T. D'Ambrosio,
2013.6.5

Sargent & Co., New Haven, Connecticut
(active 1864–present)
Doorknob and Escutcheon, ca. 1885
Bronze
Gift of Robert Tuggle in Honor of Anna T. D'Ambrosio,
2013.6.6.a-b

Mixed Media

Sterz, American (b. 1963)
tu, 2011
Video and aluminum
Gift of the artist, 2012.16

Robert Huot, American (b. 1935)
Snow, 1971
16 mm film to DVD
Museum Purchase, 2013.7

Loans

George W. King, American (1836–1922)
View of Lake Canadarago, n.d.a
and
Paul Parker, American (1905–87)
Oriskany Valley, 1950
To the North Corridor Project and Capitol Restoration
installation at the New York State Capitol, Albany,
New York, September 1, 2012 until September 1, 2014

Milton Avery, American (1893–1965)
Pink Tablecloth, 1944
To the exhibition *A Feast for the Eyes* at the Suzanne H.
Arnold Art Gallery at Lebanon Valley College,
Annville, Pennsylvania
August 31 through October 21, 2012

Piet Mondrian, Dutch (1872–1944)
No. 7, 1937–42
To the exhibition *The Geometric Unconscious: A Century
of Abstraction* at the Sheldon Museum of Art, Lincoln,
Nebraska, October 5, 2012 through January 20, 2013

Jackson Pollock, American (1912–1956)
Number 34, 1949
To the exhibition *Jackson Pollock* at the Jason McCoy
Gallery, New York, New York, November 5 through
December 14, 2012

Katherine Dreier, American (1877–1952)
Psychological Abstract Portrait of Ted Shawn, 1929
To the exhibition *American Moderns, 1910–1960: From
O'Keeffe to Rockwell* at the Everson Museum of Art,
Syracuse, New York, February 2, through May 12, 2013

Jerome Witkin, American (b.1939)
Division Street, 1984–85
To the exhibition *Drawn to Paint: The Art of Jerome
Witkin* at the Palmer Museum of Art in University
Park, Pennsylvania, February 26 through May 5, 2013

Reginald Marsh, American (1898–1954)
Zeke Youngblood's Dance Marathon, 1932
To the exhibition *Swing Time: Reginald Marsh and Thir-
ties New York* at the New-York Historical Society, New
York, New York, June 21 through September 2, 2013

Special Exhibitions

***Shadow of the Sphinx:
Ancient Egypt and Its Influence***
June 17–November 25, 2012

Paper Visions
July 21–October 28, 2012

***Seeing the World Within:
Charles Seliger in the 1940s***
October 21, 2012–January 20, 2013

Victorian Yuletide
November 23–December 30, 2012

***The Art of Subtraction:
Carvings by David Esterly***
January 29–March 17, 2013

Armory Show, One Hundred Years Later
February 2–March 31, 2013

63rd Exhibition of Central New York Artists
March 2–April 28, 2013

***Beyond Their Years:
A Look at Youth from Victorian Times to Today***
March 28, 2013– December 31, 2013

***Breathing Life into Stone:
The Sculpture of Henry DiSpirito***
May 10–September 1, 2013

***The Prints of Andy Warhol:
From A to Z and Back Again***
June 9–September 8, 2013

Grants in Support of Museum Programs

Shadow of the Sphinx: Ancient Egypt and Its Influence
Adirondack Financial Services
Arthur Foundation
Oneida County Tourism
Dr. & Mrs. Raouf Kodsy and Family

The Art of Subtraction: Carvings by David Esterly
JAY-K Lumber
Virginia & Christopher Kelly

The Prints of Andy Warhol: From A to B and Back Again
Gilroy Kernan and Gilroy Insurance

Excellus BlueCross BlueShield

Dr. and Mrs. Raouf Kodsy and Family

Oneida County Tourism

Summer ArtReach Program (developed primarily for
underserved children, ages 8-12)
Community Development Block Grant

***The First Step to Freedom: Abraham Lincoln's Prelimi-
nary Emancipation Proclamation***
Trainer Associates

General Program Support

New York State Council on the Arts with the support
of Governor Andrew Cuomo and the New York State
Legislature

Performing Arts



For Kids and Families
Lightwire Theatre Company

THE 2012-13 PERFORMING ARTS

SEASON presented an exceptional series of performances, films, educational activities and special events supported by comprehensive multi-media marketing campaigns that attracted 24,667 patrons in overall participation. The division presented 18 performances, 3 educational activities, 214 film screenings and 2 meet-the-artist receptions.

The 2012-13 **Great Artists Series** consisted of five outstanding performances. The season began with a concert performance by the **Midtown Men** that was presented in collaboration with the Broadway Theatre League of Utica. The next event featured the masterful and traditional skills of the **Shaolin Warriors**. The **Birdland Big Band** jazz ensemble presented their program "Live from Birdland" under the direction of acclaimed drummer **Tommy Igoe**. The **Great Artists Series** then welcomed the return of **The Chieftains** and their traditional Irish music during their 50th anniversary tour. The season concluded with a virtuoso vocal performance by internationally acclaimed tenor, **Lawrence Brownlee**, accompanied by **Damian Sneed** on the piano.

The **Concerts in the Court** series continued to grow this season by offering three concerts. Participation was strong, with audiences enjoying a diverse mix of music over the course of the series. The season began with a stunning solo performance by legendary jazz pianist **Joe Sample**. More jazz followed with vocalist **Hilary Kole** and her trio fresh from a number of performances in some of the finest jazz clubs in New York City. The season concluded with a traditional bluegrass concert by Nashville recording artists, **The Travlin' McCoury's**.

The **For Kids and Families Series** presented six events for young audiences and parents including a special installment of **Keyboard Conversations for Kids**. The season also featured the delightful music of **Justin Roberts**, the physical prowess of **Galumph**, comedy juggling by the **Gizmo Guys** and an interactive version of the *Three Musketeers* by the **DuffleBag Theatre Co.** The **For Kids and Families Series** also partnered with the New Hartford Central Schools PTA Council to present the **Lightwire Theatre Co.** for both a school-time performance and public performance at the James A. Meyer Performing Arts Center.

Jeffrey Siegel returned to present four evenings of **Keyboard Conversations** with programs focusing on classical compositions for dance and the works of Claude Debussy and J.S. Bach, among others. Each event in this popular series continues to sell-out.

Following a drop in attendance from the previous season the **Film Series** rebounded with an increase in participation of 20%. Competition in screening independent and foreign titles from the larger commercial cinemas continues to increase as the availability of digital equipment and titles tends to favor the larger chains. Initial exploration of our own digital conversion has just begun this season.

Series and program sponsors, individual contributors, government and foundation granting organizations, program advertisers, trade-for-service participants and dedicated MWPAI funds provided vital financial and in-kind support. New avenues of contributed income continue to be developed and implemented as feasible.

Bob Mortis

Director of Performing Arts

For a complete list of performances, films and educational activities see the Annual Report section of the MWPAI web site at www.mwpai.org.



Great Artists Series, *Shaolin Warriors*



For Kids and Families, *Galumph*



For Kids and Families, *DuffleBag Theatre Co.*

Special Focus

Collaborations

The 2012-13 season was remarkable in that it featured two first-time collaborations with outside organizations to bring acclaimed artists to the Central New York community. The **Great Artists Series** began the season with a co-presented performance by the **Midtown Men** with the **Broadway Theatre League of Utica**. This long-standing local presenter has a respected history of bringing traditional touring musicals to the area. However, the **Midtown Men** performance features a concert atmosphere more familiar to **Great Artists Series** patrons. This sort of hybrid performance is what convinced BTL Executive Director, John Fehlner, and MWPAI Director of Performing Arts, Bob

Mortis, that this would be an opportunity to work together on a project that would appeal to a very broad audience. The endeavor proved successful for both organizations, opening the door for more potential collaborations in the future.

The **For Kids and Families** series also reached out into the community to partner with the New Hartford Central Schools PTA Council to present a performance by the **Lightwire Theatre Company** in the school's auditorium. Fresh from a series of appearances on NBC's "America's

Got Talent" program, the **Lightwire Co.** provided two visually stunning performances of "The Tortoise and the Hare" and "The Ugly Duckling" utilizing their specially designed costumes trimmed in electroluminescent wire. One performance was attended exclusively by the first- and second-grade classes of NHCS; a public performance was held the following day. The collaboration worked well for both organizations and the both the PTA Council and the NHCS Superintendent have expressed interest in further joint programming opportunities.



Concerts in the Court, *Joe Sample*



Great Artists Series, *The Midtown Men*



Great Artists Series, *The Chieftains*



Concerts in the Court, *The Travlin' McCoury's*

Fountain Elms Society Members

**MUNSON
WILLIAMS
PROCTOR
ARTS
INSTITUTE**

July 1, 2012 through June 30, 2013

Proctor Level

\$10,000+ Annually

George A. Hambrecht

Williams Level

\$5,000 to \$9,999 Annually

Bette Y. Bloom

Dr. William L. Boyle, Jr.

Daniel Cominsky

Mr. & Mrs. Michael Cominsky

David & Sharon Goldenson

Elizabeth R. Lemieux, Ph.D.

William F. Locke

Munson Level

\$2,500 to \$4,999 Annually

James Frederick & Vige Barrie

Joseph & Michelle Corasanti

Dr. & Mrs. Raouf Kodsry

Anthony & Mariann Spiridigloizzi

Alan & Linda Vincent

Heritage Group

\$1,000 to \$2,499 Annually

Joseph A. Abraham

John J. Bach, Jr.

Kenneth Bausch & Melissa Reynolds

Dr. Sidney & Dr. Susan Blatt

Dr. Kenneth Novak & Dr. Ellen Blum

John C. Brown

Gerard T. Capraro & Barbara J. Galvin

Rand Carter

Eugene & Connie N. Corasanti

Mr. & Mrs. Henry F. Coupe

Mrs. Richard W. Couper

Mr. & Mrs. Ronald Cuccaro

Paul & Anna D'Ambrosio

Mr. & Mrs. Michael Damsky

Richard and Barbara Decker

Susan W. & B. Lees Divine

Mr. & Mrs. G. Leiter Doolittle

Ronald F. Draper, Jr.

Stan & Eileen Friedman

Anna S. Giacobbe & Peter Welge

Mr. & Mrs. Lawrence T. Gilroy III

Family of Lawrence W. Golden

Ronald P. & Cecelia A. Gouse

Richard & Constance Griffith

Gary & Bonnie Grossman

Family of J.K. Hage III

Mr. & Mrs. Christopher J. Kelly

Steven & Monica Kowalsky Family

Mark & Wendy Levitt

F.X. III & Pamela G. Matt

Dr. & Mrs. Theodore C. Max

Mr. Albert Mazloom

John & Catherine McEnroe

Mary McLean Evans

Robert Mortis & Brooke Thormahlen

Anne & Tom Nelson

Donald Neiman

Daniel O'Leary & Kathy Bouchard

Theresa M. Palmiero

Dr. Cynthia J. Parlato-Hurd &

Dr. Douglas Hurd

Brian Potasiewicz

Mark Potasiewicz

Albert Pylinski

Mr. & Mrs. Barton Rasmus

James & Elizabeth Ring

Linda Romano & Russell Petralia

Alice Root and John Dahlin

Vincent J. Rossi, Esq.

John & Deanna Sammon

Paul D. Schweizer, Ph.D. & Barbara Lyon

Dr. Nancy A. Shaheen & Kirk A. Evans

Robert & Sheila Smith

Elizabeth & John Snyder

Dr. & Mrs. Thomas F. Spath

Mr. & Mrs. John B. Stetson

George & Lisa Walchusky

Martha & Richard Widdicombe

Corporate Sponsors and Supporters

Adirondack Bank

Bank of America

Bank of Utica

Black River Systems Company

Brodock Press

Caruso Mclean & Co, Inc.

Cathedral Corporation

C-Flex Bearing Co., Inc.

Citizens Bank

Coca-Cola

Costello Eye Physicians & Surgeons, PLLC

Dupli Envelope & Graphics Corp

Excellus BlueCross BlueShield

Eye Associates of Utica

The Fort Schuyler Club

Gardali Crown & Bridge Lab., Inc.

GE Foundation

Gilroy, Kernan, & Gilroy, Inc.

Golden Artist Colors

Gorman, Waszkiewicz, Gorman & Schmitt

GPO Federal Credit Union

Green & Seifter, CPAs, PLLC

G.W. Canfield & Son, Inc.

H. R. Beebe, Inc.

HSBC

Hudson Valley Seniors

Image House Productions

Kellogg Company

KeyBank

Kopernik Memorial Association

Lockheed Martin Corp., Matching

Gift Program

The M & T Bank Charitable Foundation

M.Griffith, Inc. Investment Services

McDonald's

McQuade & Bannigan Inc.

Merrill Lynch - The Sherline Group
 Metropolitan Life Foundation
 Midstate Printing
 Mohawk Valley Chamber of Comm.
 Mohawk Valley Retina, P.L.L.C.
 National Grid
 National Trust Historic Preservation
 New Hartford Animal Hospital
 Northland Communications
 Northwestern Mutual, Dan Jones
 The Observer-Dispatch
 Oneida County Tourism
 Pacemaker Millar Group
 P J Green Advertising Service, Inc.
 Price Design
 Romanelli Advertising/Design, Inc
 Samson Capital Advisors LLC
 Scalzo, Zogby, & Wittig, Inc.
 Staffworks
 Sturges Manufacturing Co., Inc.
 Towne Engineering
 United Way of the Valley &
 Greater Utica Area
 Utica First Insurance
 Utica National Insurance Group
 Utica Valley Electric Supply Co.

**Premium Level Members
and Donors**

\$500-999 President's Circle

Raymond & Linda Allen
 Joan M. Bondareff
 Florence C. Bourdon
 Bernard & Jeanne Brown
 Joan Burth
 Michael & Ann Cawley
 Joyce Day Homan
 Hugh and Liz Humphreys
 Thomas Kirkpatrick
 Frank Kolbert & Frank Farmer
 George & Pinny Kuckel
 Mr. & Mrs. Alan R. Leist, Jr.
 Dr. & Mrs. Anthony Mandour
 Jean D. Mastrangelo
 Bill Pfeiffer
 John Pierson
 Elisabeth Stevens Schleussner
 Dr. & Mrs. Guy Wilcox

\$250-499 Patron

Beatrice J. Adler
 Harold Albert & Cheryl Morgan
 Mr. & Mrs. Donald C. Anthony

Mary A. Beck
 Elizabeth & Richard Bedient
 Behrens Family
 Mr. & Mrs. James L. Bramley
 Dr. Jolene Bressi & Dr. Brian Burke
 Crist & Katherine Brown
 Warren & Natalie Brown
 Mr. & Mrs. Norman W. Burch
 Dr. & Mrs. Charles E. Burns
 Mr. & Mrs. Franco M. Caparello
 Dr. & Mrs. Nicholas Capuana

Joan Clair
 Charles H. & Janet W. Clark
 Mr. & Mrs. Vincent Coyne
 Mr. & Mrs. Frederick C. Degen
 Benjamin A. DeLorio & Donald C. Daniels
 Barry & Jeanne Donalty
 Dr. Angela M. Elefante, Esq.
 Dr. Lawrence Farago & Dana Schell
 David & Donna Farquhar
 Mr. & Mrs. Peter Fava
 Mr. & Mrs. E. Burrell Fisher





John H. Fitzsimmons
 Allan & Melynda Freetage
 Mary K. Gaffey
 Gale Gilbert
 Frances K. Gilroy
 Suzanne & John Golden
 Dr. Michael R. Haines &
 Dr. Anne C. Meyering
 Elizabeth J. Harvilla
 Peter & Elizabeth Hotvedt
 Michael J. Jordan
 Dr. Ronald & Mary Kaye
 Mr. & Mrs. Murray Kirshtein
 Dr. Patrick & Marcia Knapp
 Kim Lambert & William Wheatley
 JoAnn Longo
 Leonard & Mary Marrone
 Dr. Judith & John McIntyre
 Dr. & Mrs. Paul D. Ohlbaum
 Stanley Olkowski & Gloria Olkowski
 Mr. & Mrs. Stephen Olney
 Deborah F. Pokinski
 Helen S. Price
 Peter & Nancy Rabinowitz
 Joan & Ted Rajchel
 Graham Egerton & Anne Redfern
 Dr. & Mrs. Philip L. Reitz

Patrick Reynolds & Damhnait McHugh
 Mr. & Mrs. John A. Ridgway
 Rita A. Sator
 John J. Seifert
 Elizabeth T. Nolan
 Dr. & Mrs. Albert Shaheen
 Kay Sinclair
 Kathleen Sinnott
 Wesley Smith & Diane Wolfe
 Anne Felton Spencer
 Family of Robert W. Turner
 Alane Varga & Susan Kantor
 Margaret M. Welsh
 Eleanor W. Wertimer
 Dr. & Mrs. Lester M. Wolfson
 Lori Zabar & Mark Mariscal
 Francesca Zambello & Faith Gay
 Raymond & Carole Zyla

\$150-249 Contributor

George F. Abel
 George & Joann M. Adler
 Arlene Aguam
 Linda A. Arnold
 Dr. & Mrs. Anthony F. Aveni
 Rabbi & Mrs. Henry Bamberger
 Stephen W. Barth & Denise Hash

Barbara & Francis Bennett
 Ruth Berkowitz
 Mr. & Mrs. Ernest Berkowitz
 Angeline W. Booras
 Lawrence & Alene Bosquet
 Kenneth & Loretta Boyer
 Family of Dr. Brian P. Boyle
 Dr. & Mrs. Edward Bradley
 Mr. & Mrs. Merritt Bremer
 Charles & Barbara Brown
 Leighton R. Burns
 Janet and Mike Butler
 Dr. & Mrs. S. Richard Chazin
 Dr. & Mrs. Richard Chmielewski
 Ann B. Clarke
 Scott & Judi Clippinger
 Linda Cohen & Sarah Cohen
 Thomas A. & Susan W. Conklin
 Eileen & Victor Conte
 Anne Marie Contino
 Carleton and Shelley Corey
 Joseph Cosentino & Elizabeth Nolan
 Mr. & Mrs. Leland E. Crary
 Norma J. Cutler
 Carolyn Dalton
 Dr. & Mrs. Robert O. Dell
 Dr. & Mrs. John DeTraglia

Mr. & Mrs. Kenneth Dickson
Celia A. Domser
Mark & Kathy Donovan
Donald & Linda Drescher
Mr. & Mrs. Richard W. Dygert
Calvin & Cheryl Edmiston
David Esterly & Marietta von Bernuth
Mr. & Mrs. Michael Evans
Kathleen & Donald Falkenstern
John P. Farrell, Sr.
Frank & Evelyn Fazekas
Sandra R. Ferro
James A. & Mary D. Fewlass
Dr. & Mrs. Saul Finer
Greg Forbes
Audrey Forcier & Neil Sexton
Frank & Carol Furno
Dr. Ian & Morag Galloway
Mr. & Mrs. Roger C. Gates
Chris Georges & Sarah Goldstein
Mr. & Mrs. Frank Giotto
Sara Gombatto
Barbara Brooks Goodman
Dean & Mary Gordon
James Grande & William Sequin, Jr.
Vincent M. Grove
Naomi Guttman & Jonathan Mead
Paul & Rosemary Hanley
Mr. & Mrs. Richard Hanna
Mr. Thomas Hartman
William and Grace Hartnett
Mr. & Mrs. Joseph Heck
Harold & Elegia Heintz
Paul T. & Janet L. Henderson
Dr. & Mrs. Lynn Henry
Mrs. A. Buol Hinman
Sarah Hinman
Maureen and Andrew Ho
Bambi F. Holtslander
Wendy Hovey & Richard Salerno
Joe & Mary Hoying
James C. Humphrey
Eugene & Yvonne Hutchinson
Mr. and Mrs. Charles Ide
Steven & Monica Inzer
Leanne W. Jardine
Dana & Cathy Jerrard
Linck Johnson & Susan Belasco
Heidi Jones & Jonas Kelly
Jennifer & Michael Kelberman
Shoshana Keller & Deborah Reichler
Dean & Eva Kelly
Family of Donald R. Kenderdine

Mr. & Mrs. Andrew H. Kernan
Mr. & Mrs. James C. Kernan, Jr.
Stephen & Susan Keyser
Gary Kielar
John & John Klossner
Barbara S. Kogut
Mark C. Kovacs
Dr. John S. & Susan B. Kowalczyk
Dr. William & Julie Kritzler
Roberta Krueger & Thomas Bass
Nicholas B. Kuckel
David & Joyce Kurr
Christopher & Jana Lambert
Diane & Franklyn Lawyer
Richard Lennon & Nancy Prevost Lennon
Helen A. Levy
Lisa & Amy Lopez
Linda & Steve Lubey
Luke & Micky Lucas
Theresa D. Mack
Pauline A. Mack
Mr. & Mrs. Robert Manning
James & Kim Marscher
Mr. & Mrs. John D. Marsellus
David & Ann McCarthy
Mr. & Mrs. Phillip McDowell
James B. McEvoy
William S. McMillan
Nancy L. McPherson
Richard & Miriam Mokry
Joanna L. Moore
Frank & Penny Moreno
Sharon L. Moriarity
Family of Jean & Thomas Morris
Ann Marie & John Murray
Devayani Namassivaya
Dr. & Mrs. Norman Neslin
Carrie L. Nichols
Jacqueline Noviasky & Billy Howard
Sofia Novoa & Chip Bassett
Adela Nowak
Mr. & Mrs. Lawrence Obernesser
Onno Oerlemans & Sally Cockburn
Patricia O'Neill
Stephen Orvis & Carol Ann Drogus
Mary Lawrence M. Owens
Mark & Lee Pavach
Mr. & Mrs. Philip Pearle
Aaron & Amanda Perrine
Robert & Fiona Peters
Judy & Raymond Petroski
Dr. Emerita A. Pizarro
Jo Ann B. Putnam

Beverly Quist
Jane & Anthony Rabasca
David A. Redding
Earle C. Reed
John & Edith Reile
Deborah & Christopher Riddell
Daniel & Rebecca Robbins
Dana K. & Frances R. Roecker
Jody & Gregory Roos
Marsha & Alan Roseen
Edward & Sharon Rowan
Anthony & Teresa Scalzo
Jane Schofield
Marie T. Scialdone
Edward & Robyn Shafer
Dr. Mukesh & Dr. Paru Shah
Dr. Gregory B. Shankman
Mr. & Mrs. John G. Sharp
Robert N. Sheldon
Antonia Shields
Dr. & Mrs. Scott Silver
Mr. & Mrs. Michael C. Silverman
Dr. & Mrs. Demetrios C. Skamas
Sarah Beth Smith
Carol A. Soja
Mr. & Mrs. Robert Sossen
Jane S. Spellman
John & Madeline Stephenson
Mrs. C. Arthur Sullivan
Sally & Alan Swierczek
Susan McCraith Szuba
Mr. & Mrs. William S. Tharp, Jr.
Beverly Cipollo Tobin
Lynn & Daniel Tomaino
Chuck Tomaselli & Nancy Robinson
Mr. & Mrs. Robert Tyksinski
Dr. & Mrs. Daniel Uwah
Mary & Alfred Valentini
Venezio Family
Mr. & Mrs. Dwight E. Vicks
Sara Warner & Larry Volan
Dr. & Mrs. Donald Washburn
Carolyn Owens Welch
Sharon & Ernest Williams
Matthew & Elizabeth Worth
Victoria M. Zacek

Bequests

Estate of Lucille A Kinney
Estate of Raymond Collins
Estate of Charles Pankiewicz
Estate of Ruth Bice
Anne M. Wright Trust

STATEMENT OF INCOME AND EXPENSES

Income	2012-2013	2011-2012
Investment Income	\$5,507,863	\$6,041,767
School of Art	4,531,945	4,217,599
Performing Arts	406,221	454,655
Museum of Art	230,754	414,224
Membership	205,989	220,622
Art Shop	114,274	114,982
All Other Income	187,962	156,085
Other	206,035	—
Total	\$11,391,043	\$11,619,934
Expenses	2012-2013	2011-2012
Museum of Art	\$1,138,824	\$1,282,600
School of Art	3,638,262	3,698,403
Performing Arts	708,732	796,386
Other Programs	343,224	312,908
Physical Plant	2,137,584	2,280,728
Capital and Special Provisions	1,550,344	1,510,633
Administration and General	1,037,445	1,042,148
Communications and Development	626,297	663,641
Other	—	298,144
Total	\$11,180,712	\$11,885,591
Net Income (Expense)	\$210,331	(\$265,657)

2012-2013

Income
\$11,391,043

Investment	48.4%
School of Art	39.8%
Performing Arts	3.6%
Museum of Art	2.0%
Membership	1.8%
Art Shop	1.0%
All other	1.6%

Expenses
\$11,180,712

Museum of Art	10.2%
School of Art	32.5%
Performing Arts	6.3%
Other Programs	3.1%
Physical Plant	19.1%
Capital Provisions	13.9%
Administration and General	9.3%
Communications and Development	5.6%

2011-2012

Income
\$11,619,934

Investment	52.0%
School of Art	36.3%
Performing Arts	3.9%
Museum of Art	3.6%
Membership	1.9%
Art Shop	1.0%
All other	1.3%

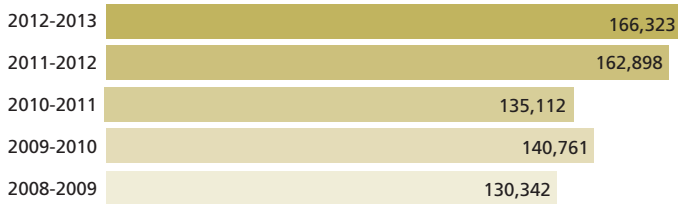
Expenses
\$11,885,591

Museum of Art	10.8%
School of Art	31.1%
Performing Arts	6.7%
Other Programs	2.6%
Physical Plant	19.2%
Capital Provisions	12.7%
Administration and General	8.8%
Institutional Advancement	5.6%
All other	2.5%

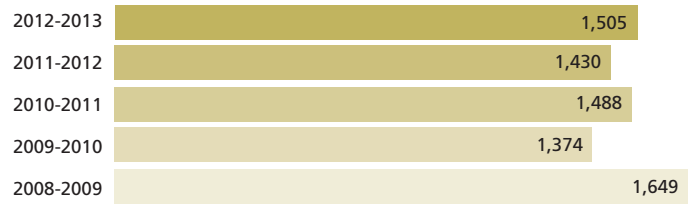
ANNUAL ATTENDANCE



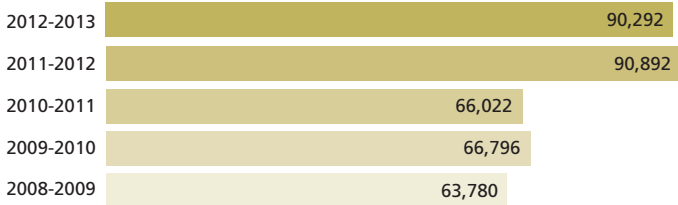
TOTAL ANNUAL ATTENDANCE & PARTICIPATION



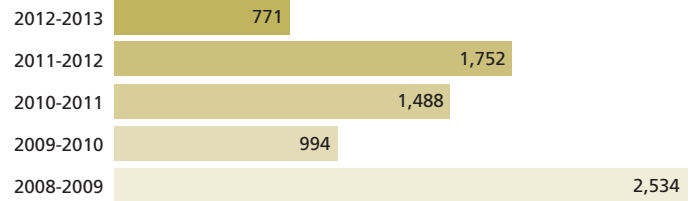
SCHOOL OF ART ENROLLMENT



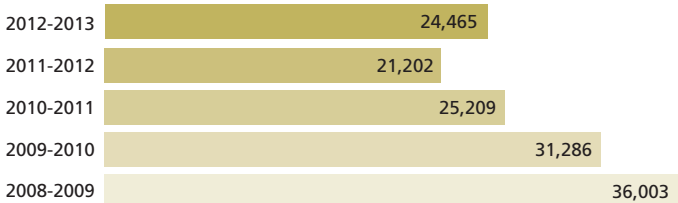
MUSEUM OF ART



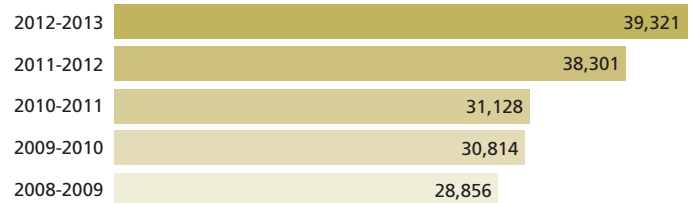
SCHOOL OF ART EVENTS



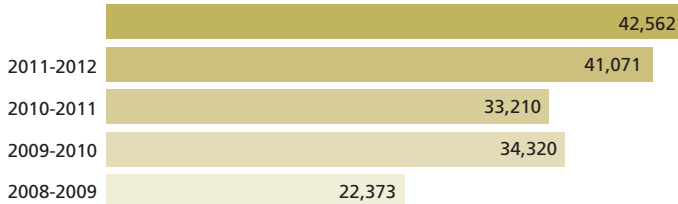
PERFORMING ARTS



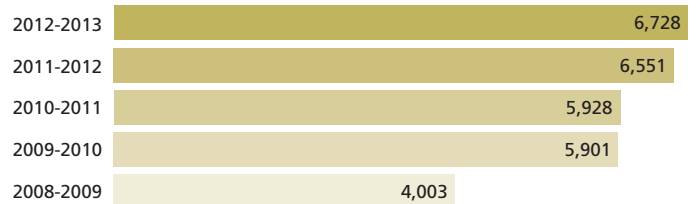
ARTS FESTIVAL



MWPAI OTHER & COMMUNITY GROUPS



LIBRARY



2012-2013

MUNSON
WILLIAMS
PROCTOR
ARTS
INSTITUTE

SPONSORS

GREAT ARTISTS SERIES

Series Sponsor: MetLife Foundation

The Midtown Men

Co-presented with Broadway Theatre League

Shaolin Warriors

Bank of Utica

Birdland Jazz

Citizens Bank

Chieftans

Cathedral Corporation

Lawrence Brownlee

Bank of America & Merrill Lynch—
The Sherline Group

CONCERTS IN THE COURT SERIES

Series Sponsor: Caruso McLean Financial Services

Joe Sample

1st Source Federal Credit Union

Hilary Kole

Empire Recycling

The Travelin' McCourys

National Grid

Orleans w/John Cafferty

P.J. Green & McDonald's

FOR KIDS AND FAMILIES SERIES

Series Sponsor: National Grid

Keyboard for Kids

Dr. Cynthia Parlato, Dr. Kenneth Novak
& Dr. Douglas Hurd

Justin Roberts

Northwestern Mutual Financial Network
Greater New York Group-Utica

Galumph

Northwestern Mutual Financial Network
Greater New York Group-Utica

Ugly Duckling

Coca Cola

Gizmo Guys

Excellus BlueCross BlueShield

Dufflebag Theatre

Excellus BlueCross Blue Shield

KEYBOARD CONVERSATION SERIES

Dr. Cynthia Parlato, Dr. Kenneth Novak
& Dr. Douglas Hurd

FILM SERIES

M&T Bank

SHADOW OF THE SPHINX

Adirondack Financial Services
Arthur Foundation
Oneida County Tourism
Dr. & Mrs. Raouf Kodszy and Family

DAVID ESTERLY

JAY-K Lumber
Virginia & Christopher Kelly

ANDY WARHOL

Gilroy Kernan and Gilroy Insurance
Excellus BlueCross BlueShield
Dr. & Mrs. Raouf Kodszy and Family
Oneida County Tourism

ABRAHAM LINCOLN'S EMANCIPATION PROCLAMATION

Trainor Associates

ARTREACH

Community Development Block Grant

MIXERS

GPO Federal Credit Union

ANTIQUÉ AND CLASSIC CAR SHOW

Automobile Club of Utica
Speedy Awards and Engraving
Almy and Associates Consulting Engineers
JCA of Utica, Inc.
Harley-Davidson of Utica
TNT Cycle
Hills and Mark's Inc.

FOUNTAIN ELMS INVITATIONAL

Oriskany Garage and Tire

EVENING CONCERTS

WODZ
WIBX
WFRG
WLZW

ARTS FESTIVAL

Nexstar Broadcasting – WUTR (ABC), WFXV
(FOX), WPNY (MY Network)

Munson-Williams-Proctor Arts Institute is an arts center serving diverse audiences through three program divisions— Museum of Art, Performing Arts, and School of Art.

The Institute is named to honor the founders who established it in 1919 as a legacy for their community, Utica, N.Y. and the surrounding region. Programs evolving from their interests and intentions now include 800 events annually with 166,323 total participation. It was honored in 1998 as a Governor’s Arts Award recipient.

Museum of Art – A renowned art collection, a broad array of temporary exhibitions, and educational programs for all ages are presented in a distinguished 1960 International style gallery building designed by Philip Johnson, and in historic Fountain Elms, a superbly restored Italianate mansion designed by William Woollett, Jr. in 1850. These two buildings are connected by a Museum Education Wing that was dedicated in service to the central New York State community in 1995, and named in honor of Milton J. Bloch on the occasion of his retirement as the Institute’s President in December 2008.

Performing Arts – More than 200 events year-round feature the world’s finest soloists and ensembles, rising stars, cinema, concerts with commentary, outdoor festival performances, children’s programs, educational activities and special events.

School of Art – Professional instruction with total annual enrollment of 1,700 adults, teens, and children includes part-time community classes for beginners through advanced students.

PrattMWP – An alliance between Munson-Williams-Proctor Arts Institute School of Art and internationally renowned Pratt Institute provides world-class fine art instruction in central New York.

The Institute also offers a summer Arts Festival, art and music libraries, an active membership program, a Gift Gallery, and outstanding rental facilities ideal for public programs and private events.

© Copyright 2012

Munson-Williams-Proctor-Arts Institute
310 Genesee Street
Utica, New York 13502
(315) 797-0000
www.mwpai.org

All rights reserved

Printed in the United States of America

Production Management: Michele Murphy

Design: McClintick Design, Stephanie McClintick

Photography: Arnal Photography, Larry Pacilio,
Revette Photography

Accredited by:

American Alliance of Museums

National Association of Schools of Art and Design

Affiliations:

American Alliance of Museums

American Symphony Orchestra League

Art Libraries Society of North America

Association of Art Museum Directors

Association of Performing Arts Presenters

Central New York Library Resource Council

International Association of Assembly Managers

International Performing Arts for Youth

International Ticketing Association

International Society for the Performing Arts

Museum Association of New York

Museum Computer Network

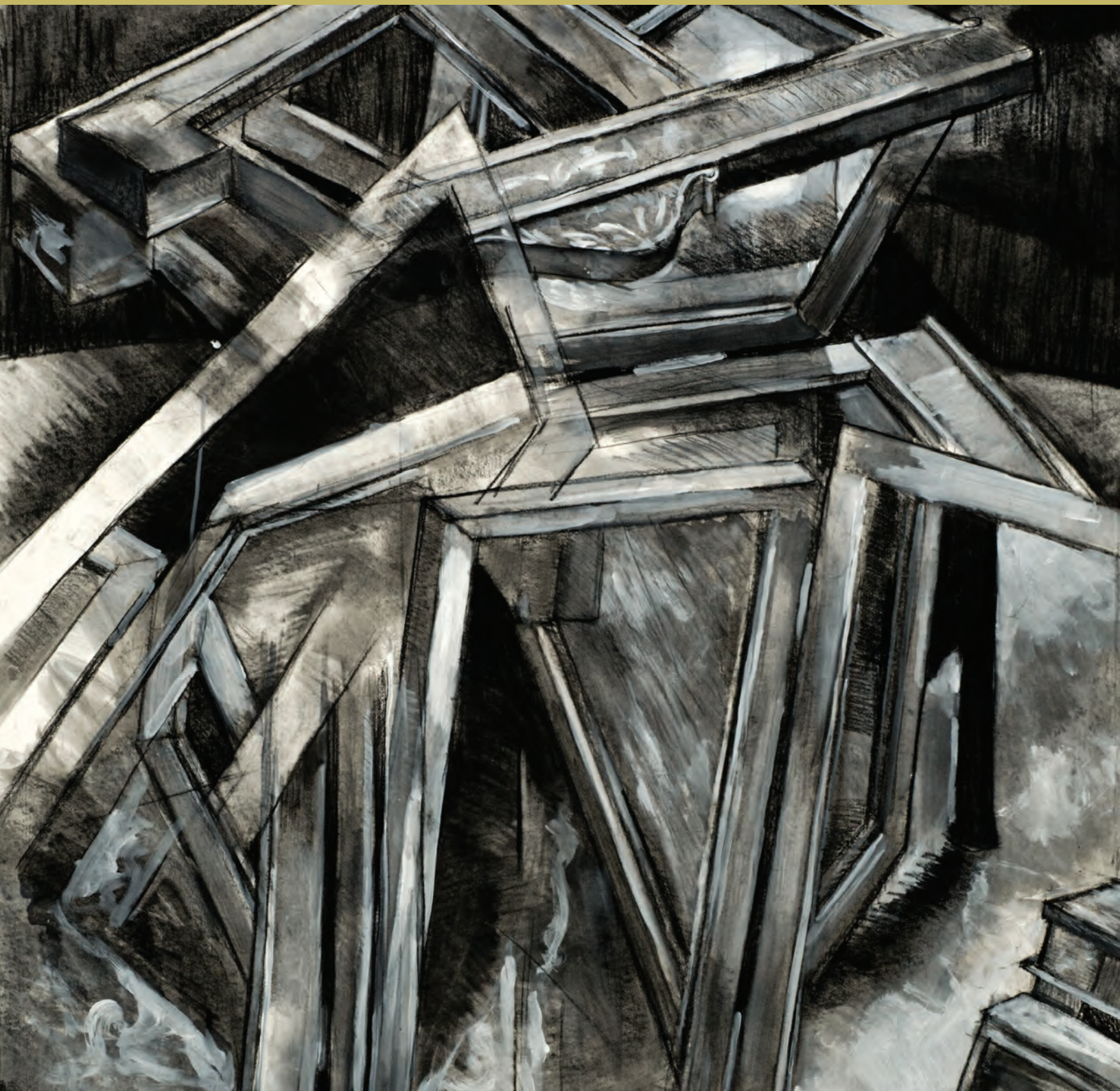
New York State DanceForce

United States Institute for Theater Technology, Inc.

Upstate New York Presenters

Williamstown Art Conservation Center

While every effort has been made to review this report, errors or omissions sometimes occur in a list of this length. We would be most grateful if oversights were brought to our attention.



MUNSON
WILLIAMS
PROCTOR
ARTS
INSTITUTE

